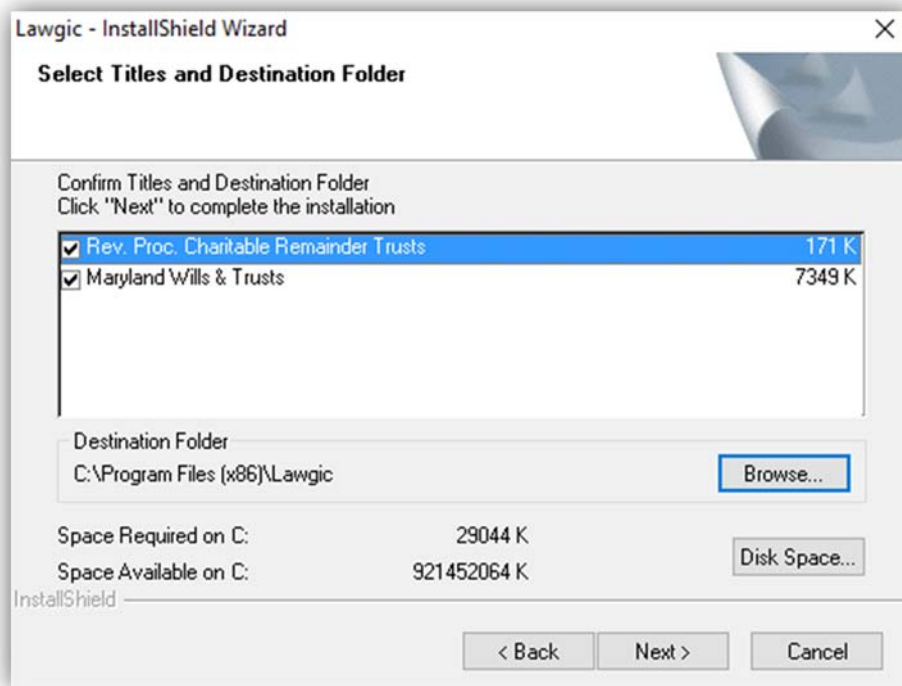




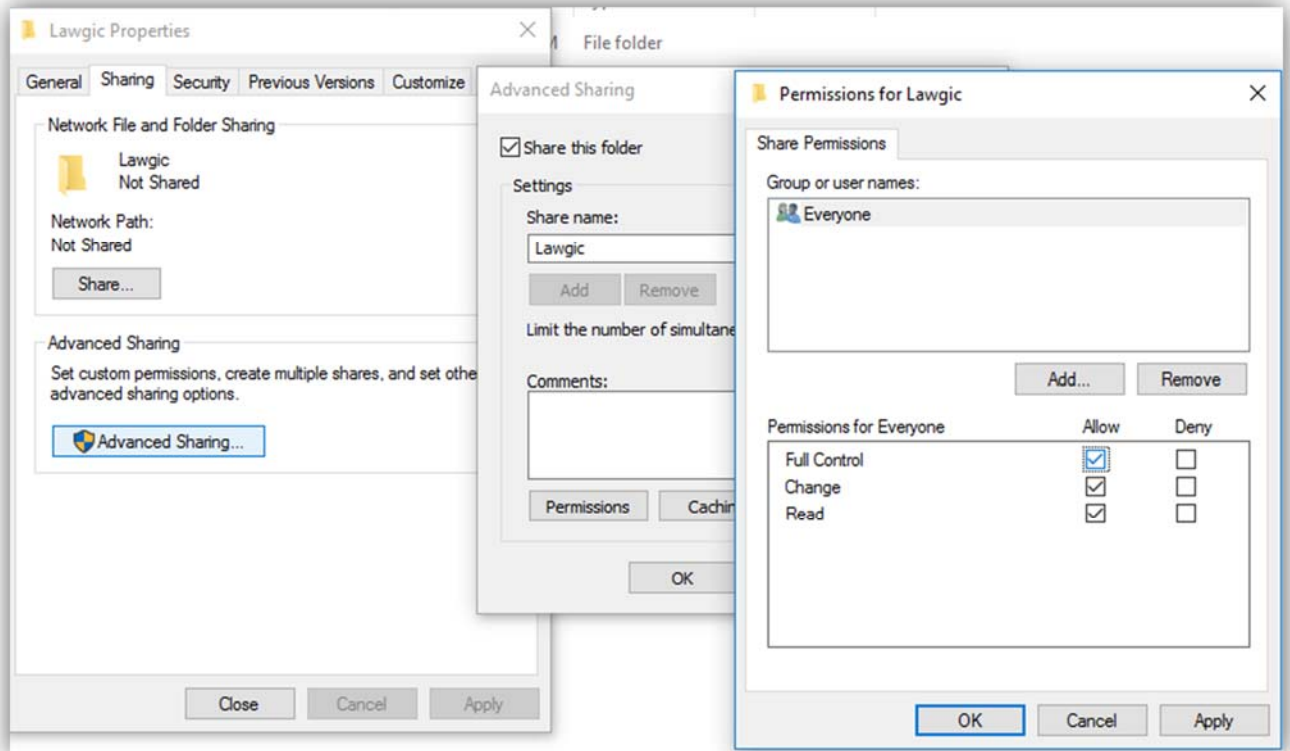
NETWORK INSTALLATION INSTRUCTIONS

This uses the network to share the Lawgic answer files, template files and flag files. The Lawgic program itself is installed on each individual's workstation. On 32-bit based client workstations the Program Files directory will not have (x86) appended to the directory name.

1. Install Lawgic to each user's **workstation**. Note the destination drive letter and folder where you choose to install Lawgic (this is the *local path*).
Important: Java Runtime Environment (JRE) will be installed with the initial installation.

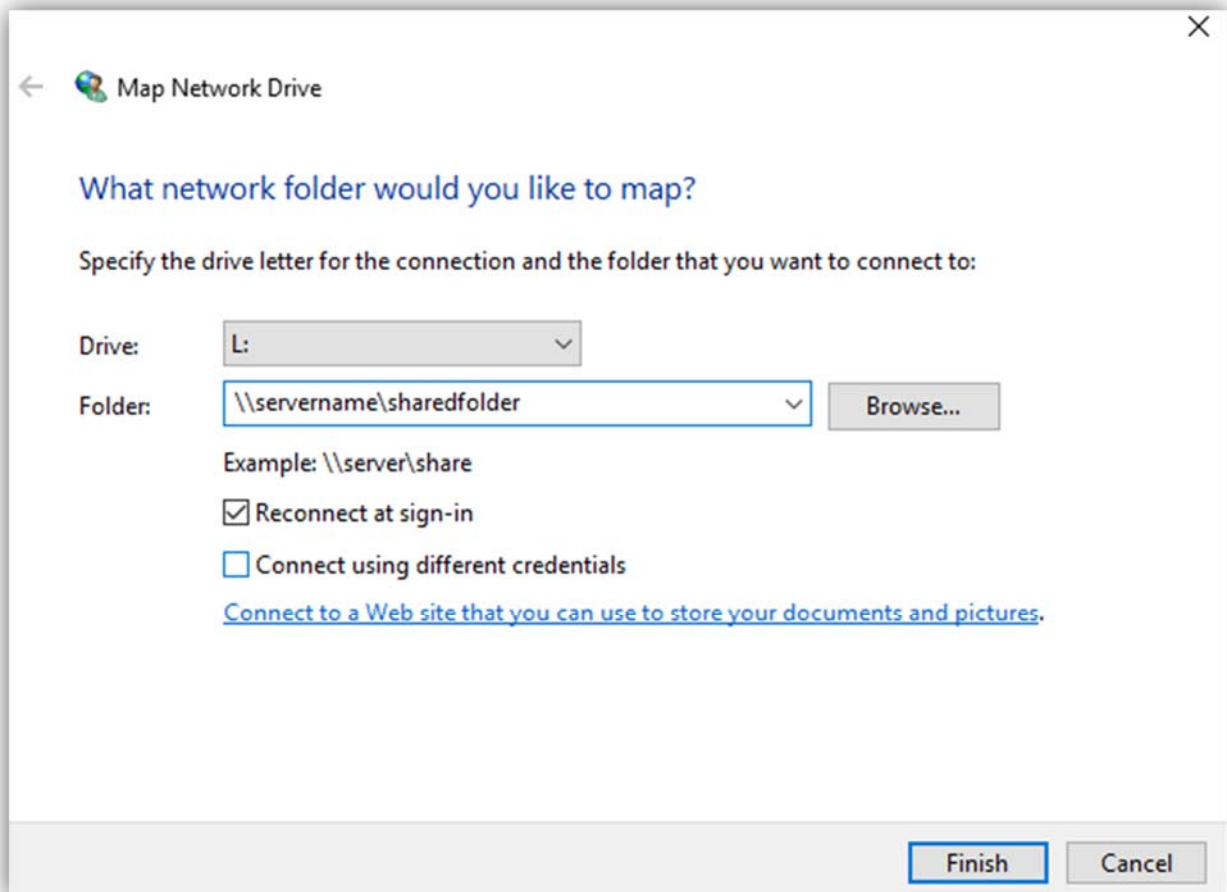


2. Create a Lawgic folder on the **server** where you will be accessing and storing the Lawgic files. Note the location where you create the Lawgic folder. (This will become the server path. i.e. \\<servername>\C:\Program Files (x86)\Lawgic). The folder needs to be shared with all users accessing the Lawgic software and will need full control granted to the users.



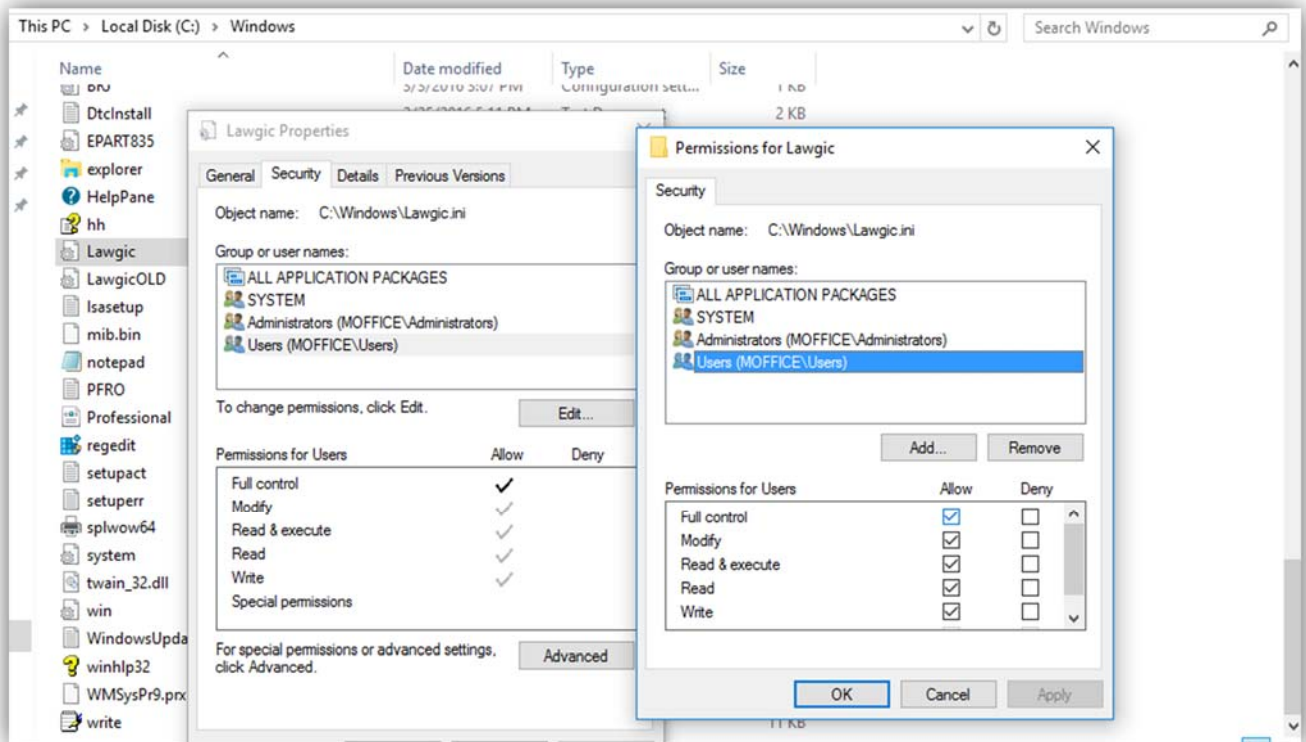
*If you already use a shared folder you can create the Lawgic folder inside of this share.

3. On each workstation map a network drive to the Lawgic folder on the server. (Use the server path. i.e. \\servername\location of shared folder). You should use the same drive letter on each workstation for ease of administration.

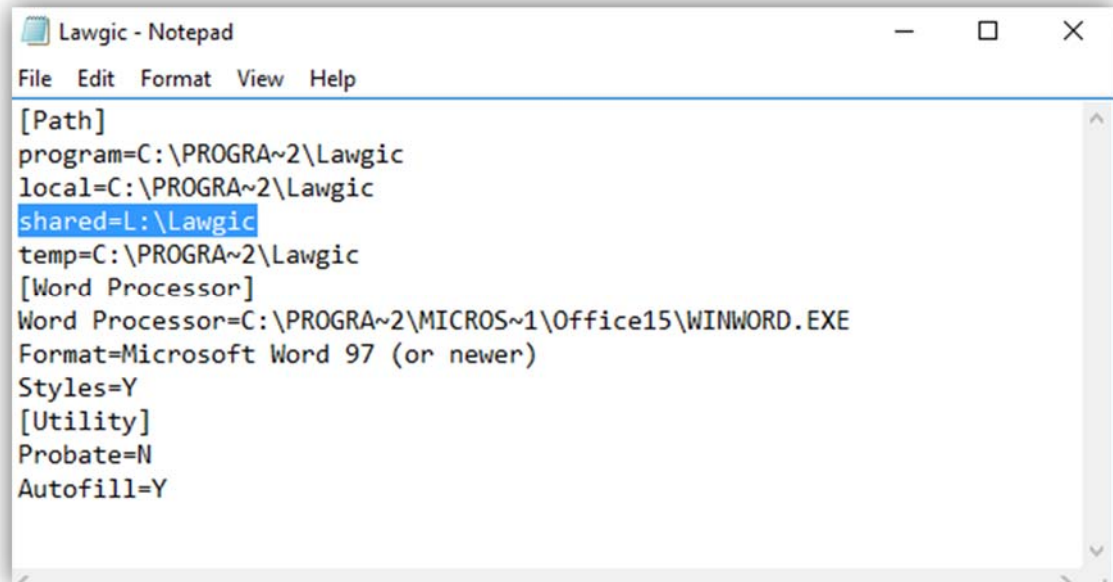


*If you already use a mapped drive to access the server's shared folder as above at #2, you can use this drive letter followed by the \Lawgic folder.

4. Next, find the **lawgic.ini** file in the Windows folder (C:\Windows) of each user's **workstation**. Right click this file and left click properties. On the security tab, verify the users group has full control next to allow checked. If not, click the edit button and highlight the users group and then check the full control box under allow for the users group. Click Apply, OK and then OK again.



5. Now open the lawgic.ini file in Notepad. Change the “**shared**” **[PATH]** section so that the path specified is the *server path* from step 2. Do not change the *local path*, the *program path* or the *temp path*. Be sure to save the file. **This change must be made to each user’s lawgic.ini file.**



```
Lawgic - Notepad
File Edit Format View Help
[Path]
program=C:\PROGRA~2\Lawgic
local=C:\PROGRA~2\Lawgic
shared=L:\Lawgic
temp=C:\PROGRA~2\Lawgic
[Word Processor]
Word Processor=C:\PROGRA~2\MICROS~1\Office15\WINWORD.EXE
Format=Microsoft Word 97 (or newer)
Styles=Y
[Utility]
Probate=N
Autofill=Y
```

L:\ is representing the mapped drive letter you chose in step 3. This will differ depending on what letter you used for your mapped drive.

Important: In the Lawgic program the Open Answer File dialog box will show a “Shared” box. By default, the box will be “checked” which means that answer files are opened from the Shared folder. When you uncheck the box, the answer file will be opened from the Local folder on your computer. If you select **Save** or **Save As** from the **File** menu, your answer file will automatically be saved to the Shared folder on the network.